

**ITEM 13. PARKING – DISABILITY PARKING ONLY – DERWENT STREET  
GLEBE**

**TRIM RECORD NO: 2016/510912**

**RECOMMENDATION**

It is recommended that the Committee endorse the following reallocation of parking in Derwent Street, Glebe, as “Disability Parking Only”.

- (A) On the northern side of Derwent Street between the points 35.2 meters and 58.6 metres (three parking spaces) west of Mitchell Street;
- (B) On the southern side of Derwent Street between the points 61.6 meters and 69.4 metres (one parking space) west of Mitchell Street; and
- (C) On the southern side of Derwent Street between the points 92.9 meters and 100.7 metres (one parking space) east of Mitchell Street.

**VOTING MEMBERS FOR THIS ITEM**

<b><i>Voting Members</i></b>	<b><i>Support</i></b>	<b><i>Object</i></b>
City of Sydney		
Roads and Maritime Services		
NSW Police – Leichhardt LAC		
Representative for the Member for Balmain		

**DECISION**

**BACKGROUND**

Residents of Derwent Street, Glebe, have requested the City to change the five part-time “Disability Parking Only” spaces to full-time restrictions. The residents have advised that they are not in a wheelchair but cannot physically walk far.

**COMMENTS**

Derwent Street, Glebe, between St Johns Road and Catherine Street, is designated for two way traffic flow with an approximate width of 12.8 metres. The road and footway grades are relatively flat adjacent to the five existing part-time “Disability Parking Only” spaces in the street.

The five part-time “Disability Parking Only” spaces is currently signposted as “2P Ticket 8am-6pm Mon-Fri Permit Holders Excepted Area G” and “Disability Parking Only Other Times”.

Changing the five part-time “Disability Parking Only” spaces to full-time restrictions will improve access for Mobility Parking Scheme (MPS) permit holders.

Footpaths (approximately 3 metres wide) are provided on both sides of the street.

The Australian Standard for on-street disability parking (AS 2890.6 – 2009) requires the provision of a 3.2 metre wide by 7.8 metre long bay.

The five “Disability Parking Only” spaces will be upgraded to 7.8 metre long bays and with consideration for the width of the existing parking lane in Derwent Street, a 3.2 metre wide bay can be accommodated within the carriageway.

Although the residents are not wheelchair-bound and kerb ramps are not necessary, the City will investigate installing ramps at this site should the proposal be endorsed.

### **CONSULTATION**

The City notified local residents and businesses in the area. There were 89 letters sent out with no responses supporting or opposing the proposal.

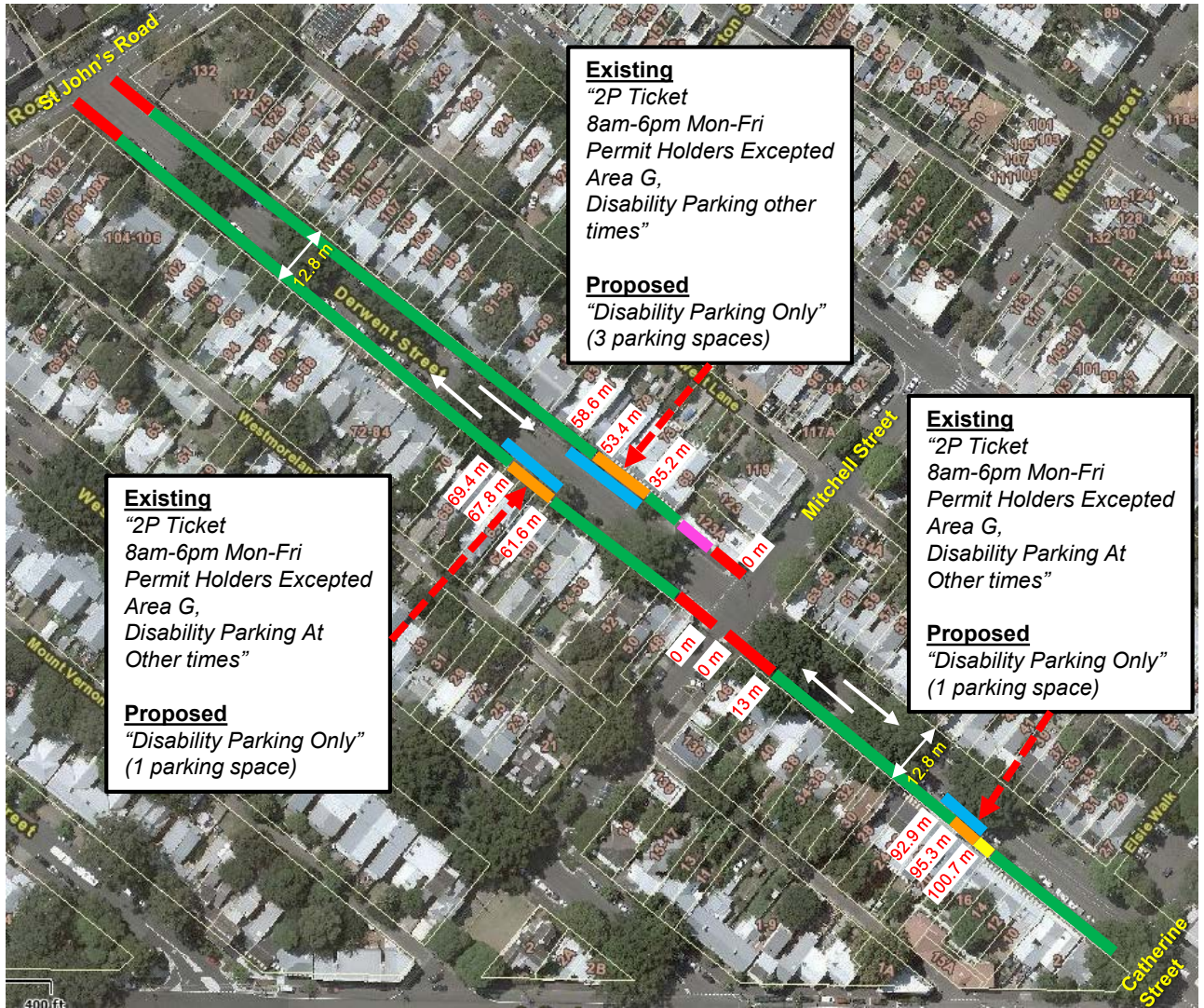
### **FINANCIAL**

Funds are available in the current budget.

### **ATTACHMENTS**

Parking – Disability Parking Only – Derwent Street Glebe

Ganesh Vengadasalam, Senior Traffic Engineer



**Existing**  
 "2P Ticket  
 8am-6pm Mon-Fri  
 Permit Holders Excepted  
 Area G,  
 Disability Parking other  
 times"

**Proposed**  
 "Disability Parking Only"  
 (3 parking spaces)

**Existing**  
 "2P Ticket  
 8am-6pm Mon-Fri  
 Permit Holders Excepted  
 Area G,  
 Disability Parking At  
 Other times"

**Proposed**  
 "Disability Parking Only"  
 (1 parking space)

**Existing**  
 "2P Ticket  
 8am-6pm Mon-Fri  
 Permit Holders Excepted  
 Area G,  
 Disability Parking At  
 Other times"

**Proposed**  
 "Disability Parking Only"  
 (1 parking space)

- |  |   |   |
|--|---|---|
| <p><b>Existing</b><br/>         2P Ticket<br/>         8am-6pm<br/>         Mon-Sat</p> <p>4P Ticket<br/>         6pm-10pm<br/>         Mon-Sat<br/>         8am-10pm<br/>         Sun &amp; Public Holidays<br/>         Permit Holders<br/>         Excepted<br/>         Area G</p> | <p><b>Existing</b><br/>         2P Ticket<br/>         8am-6pm<br/>         Mon-Fri<br/>         Permit Holders<br/>         Excepted<br/>         Area G</p> <p>Disability Parking At<br/>         Other Times</p> <p><b>Existing</b><br/>         No Parking<br/>         8am-6pm Mon-Fri<br/>         CSAHS Vehicles<br/>         Excepted</p> | <p><b>Proposed</b><br/>         Disability Parking<br/>         Only</p> <p><b>Existing</b><br/>         No Parking</p> <p><b>Existing</b><br/>         No Stopping</p> |
|--|---|---|

Source: Dekho  
 (October 2016)

## PROPOSAL

### PROPOSED DISABILITY PARKING DERWENT STREET GLEBE

